

## Lake Garden Village residential complex

Location **Kyrenia, Esentepe**



### About the project BAŞTAŞLAR

Developer **The Cove-Baştaşlar Construction**

Start of sale **2023**

Key handover **2027**

Houses/blocks **7**

Building floor **2** **2**  
 Min Max

Units total **24 - Studio, 36 - 1+1, 16 - 2+1, 8 - 3+1**

Distance to the sea - 1000 m

Distance to key locations:  
 Close location to Esentepe

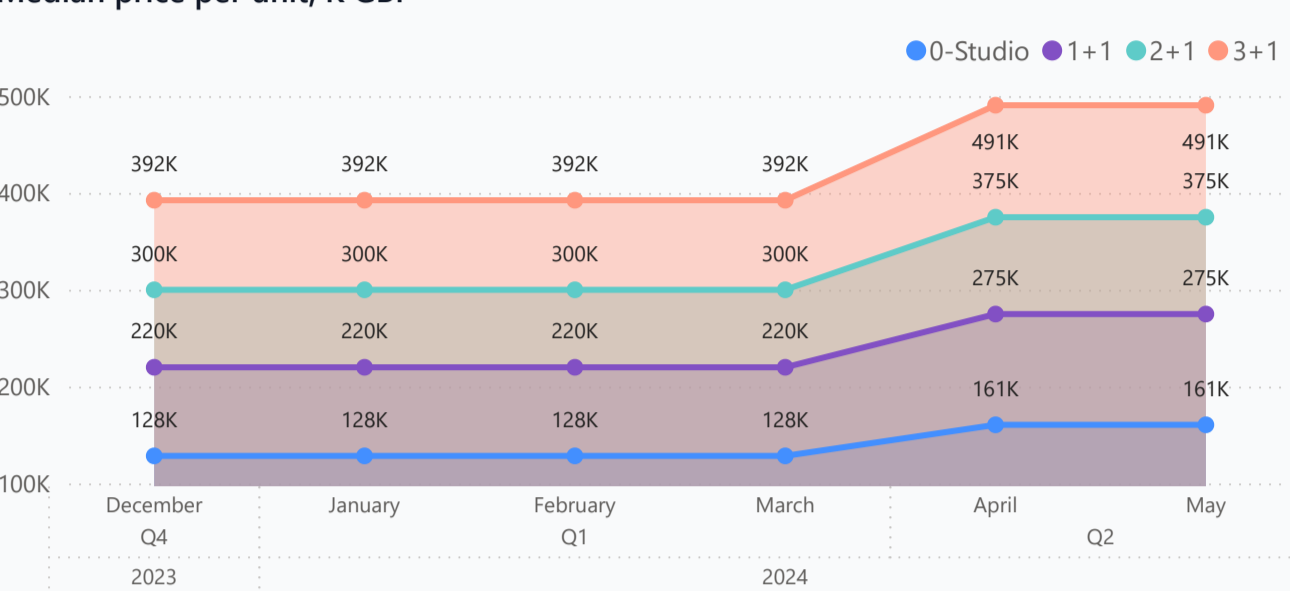
Welcome to Lake Garden Village, a residential complex that is located in the most active area of the project and offers its residents a lively atmosphere and a rich selection of amenities. This picturesque complex is designed to provide a comfortable and active stay surrounded by nature and beauty. The Lake Garden Village apartments offer spectacular sunset views with sea, mountain and valley views, creating a truly enchanting atmosphere and allowing residents to enjoy incredible scenery every day. Lake Garden Village includes 78 apartments of various layouts.

### Complex infrastructure

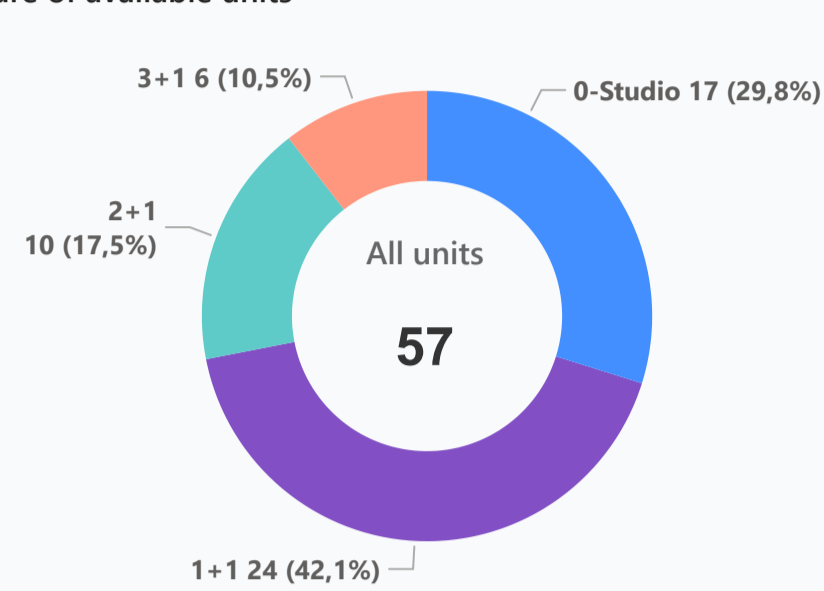
- Café
- Central generator
- Closed territory
- Kid's play room
- Kid's playground
- Open pool
- Parking
- Tennis court

### Available units **57** / 84 total

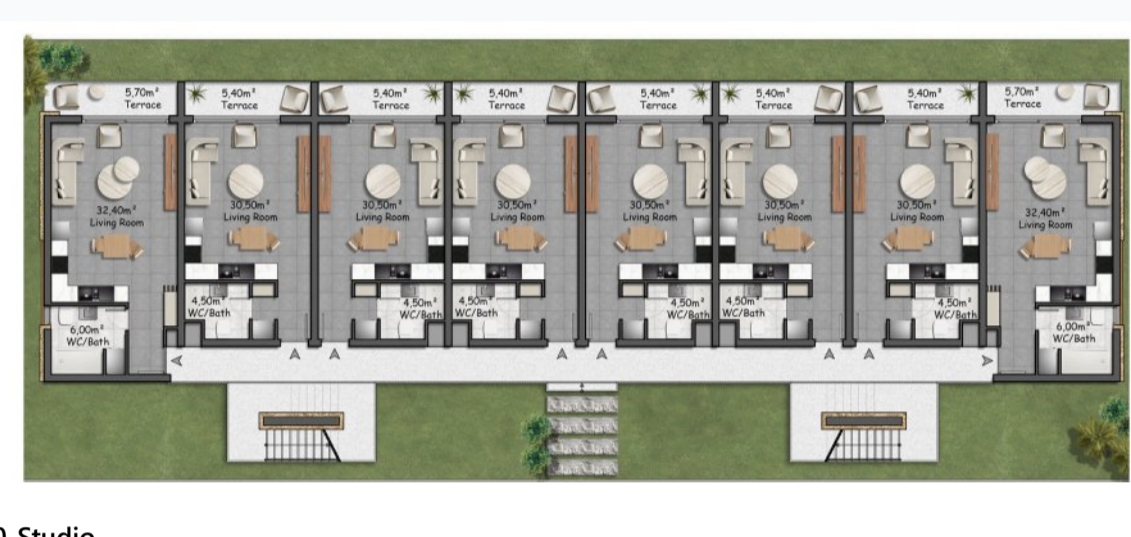
#### Median price per unit, K GBP



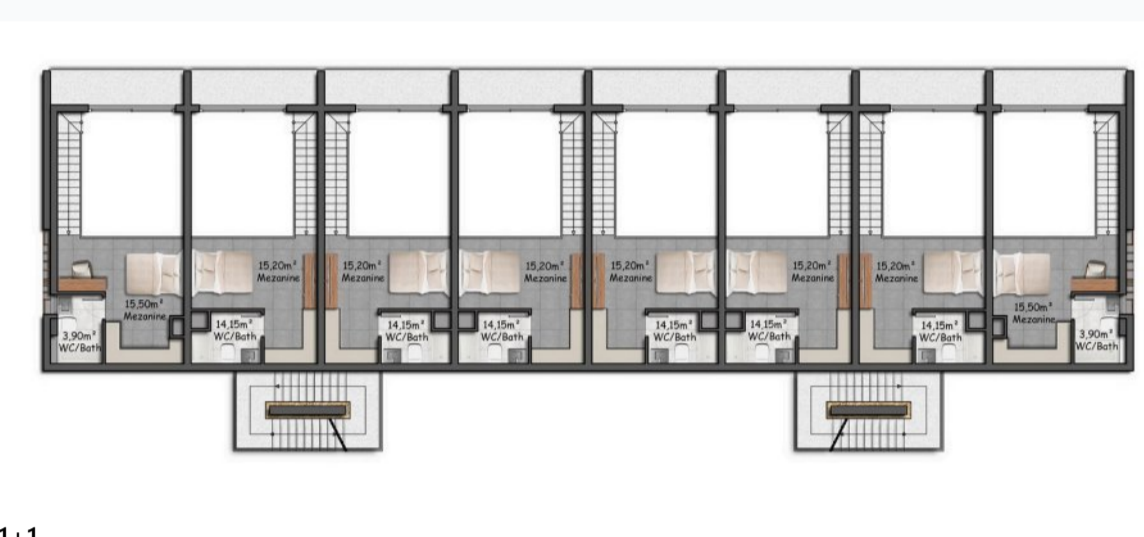
#### Structure of available units



### Plans



0-Studio



1+1



2+1



3+1

### Payment plans

Deposit (non-refundable) 2000 GBP for 2 weeks, 5000 GBP for a mon...

Option	Down payment	Installments months	Discount	Offer
Option 1	35%	65% till key	-	-
Option 2	35%	35% till key, 30...	-	-
Option 3	-	-	-	-
Option 4	-	-	-	-

### Special offer

Fully furnished design package

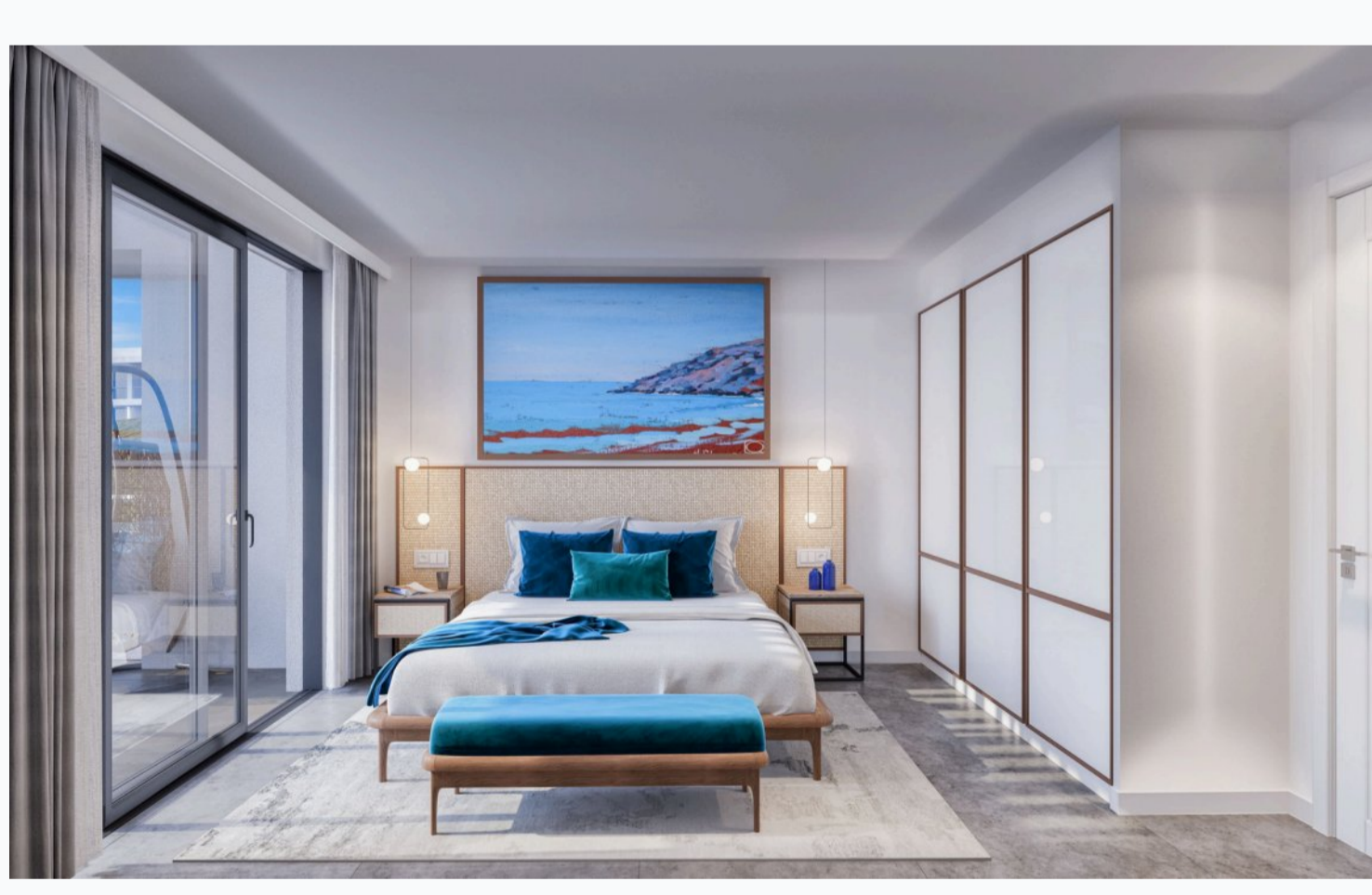
Rental guarantee

Trafo 2000 GBP Resale after 35% Maintenance fee Studio 125 GBP, 1+1 175 GBP, 2+1 and 3+1 225 GBP Rental services 40%

### Details

Bedrooms	Subtype	Block	Unit №	Floor	View	Bathroom	Internal area, sq. m	Balcony/Terrace, sq. m	Rooftop terrace, sq. m	Garden, sq. m	Gross covered area, sq. m	Current price, GBP	Price per sqm, GBP
1+1	Loft	B	B14	01			61	5	28		94	262 375	2 791
1+1	Loft	B	B15	01			61	5	28		94	262 375	2 791
1+1	Loft	C	C12	01			67	5	28		101	293 625	2 907
1+1	Loft	C	C13	01			67	5	28		101	293 625	2 907
1+1	Loft	C	C14	01			67	5	28		101	293 625	2 907
1+1	Loft	C	C15	01			67	5	28		101	293 625	2 907
1+1	Loft	C	C9	01			69	5	34		109	318 625	2 923
1+1	Loft	D	D10	01			67	5	28		101	315 500	3 124
1+1	Loft	D	D11	01			67	5	28		101	315 500	3 124
1+1	Loft	D	D12	01			67	5	28		101	315 500	3 124
1+1	Loft	D	D13	01			67	5	28		101	315 500	3 124
1+1	Loft	D	D9	01			69	5	34		109	321 750	2 952
2+1	Flat	A	A4	0			79	11			89	374 875	4 212
2+1	Flat	A	A5	0			79	11			89	374 875	4 212
2+1	Flat	A	A18	01			83	7	39		128	393 625	3 075
2+1	Flat	B	B4	0			79	11			89	374 875	4 212
2+1	Flat	B	B5	0			79	11			89	374 875	4 212
2+1	Flat	E	E2	0			73	14			87	364 250	4 187
2+1	Flat	E	E3	0			73	14			87	364 250	4 187
2+1	Flat	E	E4	0			75	18			93	376 750	4 051
2+1	Flat	E	E6	01			73	9	62		144	384 875	2 673
2+1	Flat	E	E7	01			73	9	62		144	384 875	2 673
3+1	Flat	F	F1	0			119	34			153	474 875	3 104
3+1	Flat	F	F3	01			119	34	133		271	506 125	1 868
3+1	Flat	G	G1	0			119	34			153	474 875	3 104
3+1	Flat	G	G2	0			119	34			153	474 875	3 104
3+1	Flat	G	G3	01			119	19	133		271	506 125	1 868
3+1	Flat	G	G4	01			119	19	133		271	506 125	1 868

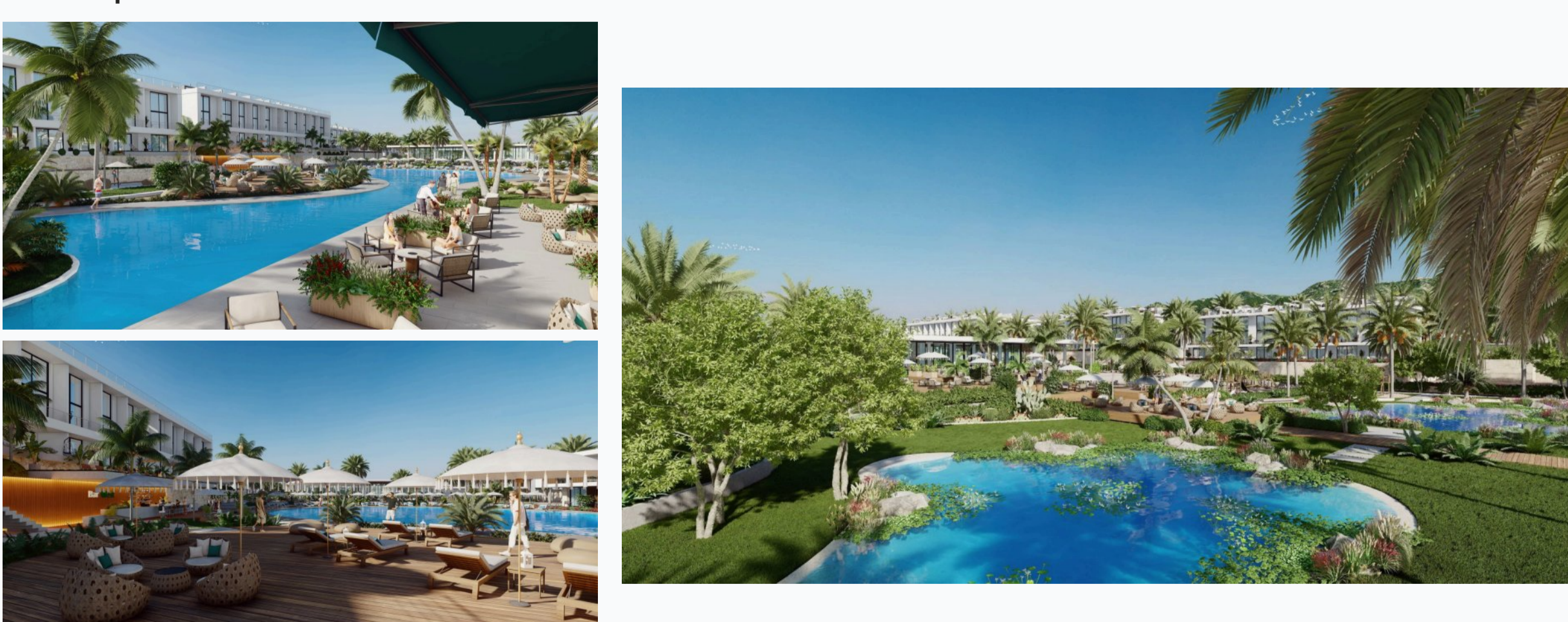
### Interior specification



### Interior specification

- Air Conditioner
- Ceramic flooring
- Double glazed windows
- Natural marble or travertine window sill

### Exterior specification



### Exterior specification

- Terracing with inbuilt lighting & power sockets

### Location of complex

